



THE CALLBOARD

OF THE REDWOOD EMPIRE DIVISION

April – June 2003

May Meeting & SWAP MEET

Vallejo Model Railroad Club

SOLANO COUNTY FAIRGROUNDS

The annual business meeting of the Redwood Empire Division will be held on **Saturday May 10th** at the Vallejo Model Railroad Club (VMRC) in the Solano County fairgrounds at 1:00 PM. In addition, the VMRC club will host a **SWAP MEET** and has invited individuals from a number of railroad clubs in the bay area to participate. Tables will be provided outside the Civic building (weather permitting), adjacent to the club with a limit of one table per person. The **SWAP MEET** will take place between 12 noon and 4 PM, with setup time to be between 11 AM and 12 noon. The VMRC will collect 10% of the proceeds from the sale of all items, which will be split equally between the VMRC and RED.

If you plan to sell items, please let VMRC know so they can obtain the proper table space. **Identify yourself as an RED member.** The club has requested notification by May 5th but hopefully they can accommodate you as long as you notify them ASAP ahead of time. Please telephone (see next paragraph) or send an e-mail to:
mpfeiff@bart.gov

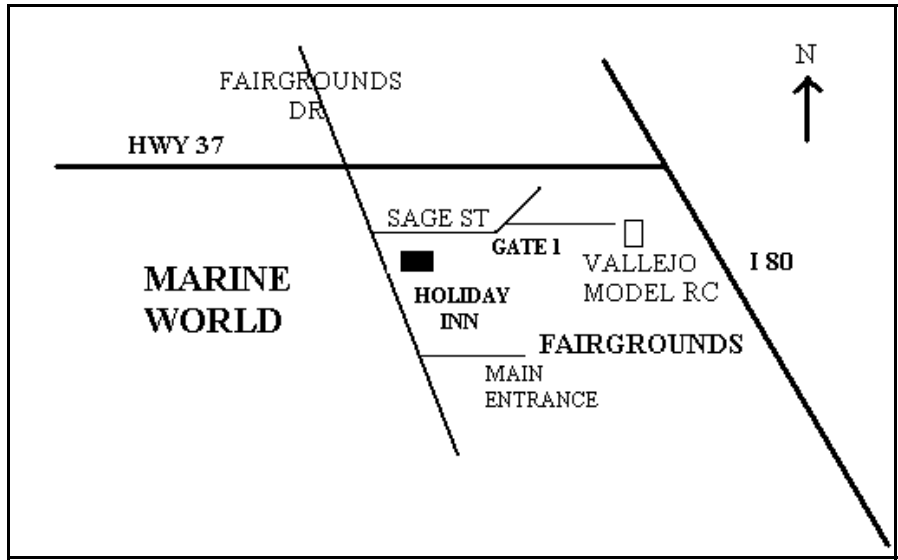
For further information about the **SWAP MEET**, call VMRC president Mark Pfeiffer (daytime) at (510)464-6692 or leave a message at the club (707)643-1809.

The RED business meeting will include the election of a new division superintendent and chief clerk. A

ballot is included for RED members with this CALLBOARD issue. Candidate statements for superintendent are included on page 3.

Everyone attending the RED meeting will get a free door prize ticket. If you are wearing your division name badge it will be worth an additional free ticket, as will bringing at least one guest with you. The special door prize, at three tickets for a dollar, will be a \$25.00 gift certificate donated by **The Loose Caboose Hobbies** store in Napa. Their location is 2412 Jefferson St., just north of Lincoln Ave., across from the Napa High school.

The *Vallejo & Solano Western* lay-
(Continued on page 2)



STAFF ROSTER

DIRECTOR

Ron Plies
P.O. Box 950, Fortuna, CA 95540
(707)725-9063
E-mail: rlplies@cox.net

SUPERINTENDENT

Howard Brown
2321 Sunrise Ave, Santa Rosa, CA 95405
(707) 578-7167
E-mail: howardb@sonic.net

CHIEF CLERK

Pat Boyle
6425 Vine Hill Rd, Sebastopol, CA 95472
(707) 576-7605
E-mail: patnt@sonic.net

CONTESTS

Open

MEMBERSHIP

Mike McSween
2033 McSween Lane, Petaluma, CA 94954
(707) 762-8585

TRAIN SHOWS

John Leins
731 San Marco, Fairfield, CA 94533
(707) 422-8266

LAYOUT TOURS

Open

NOMINATIONS

Ed Zakareckis
2408 Homestead Court
Fairfield, CA 94533-7137
(707)425-1159
E-mail: ezak@castles.com

ACHIEVEMENT PROGRAM

Harold Mentzer
102 Berna Avenue, Napa, CA 94559
(707) 226-5153
E-mail: HSMentzer@aol.com

ESTATE COUNSELOR

Don Clauder
305 Garfield Park, Santa Rosa CA, 95409
(707) 539-3510

CALLBOARD EDITOR

John Rolston
240 Chase St., Sonoma CA, 95476
(707) 938-5478
E-mail: jrolston@pacbell.net

(RED May Meeting Continued from page 1)

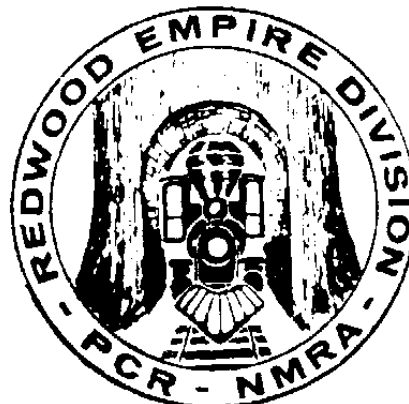
outs will be open to all RED members to operate. The club operates both N and HO scale layouts covering over 2000 square feet. Plan to bring your own rolling stock and motive power to see how good it looks on a first class club layout. The only requirement is that the equipment meets NMRA Standards and has properly aligned Kadee or equivalent couplers. The decision on any questions about conformance will be at the discretion of the Vallejo club.

SHIRLY MENTZER will be on hand with her sandwiches, brownies and coffee. With food like hers there's no reason to ever go hungry at an RED meet.

Because of the **SWAP MEET** being held at this meeting, no clinic or contest is scheduled and there will be no home layout tour afterwards.

To get to the club house at the Solano County Fairgrounds, use the Sage Street Gate #1 entrance. If stopped at the Stage Street gate entrance, tell the guard you're going to the Vallejo Model Railroad Club. A location map is included on page 1.

We look forward to seeing all of you in Vallejo.



DIRECTOR'S REPORT BY RON PLIES

It looks like we are doing a better job at the RED meetings about getting out of our safe circle of friends and getting to know some of the new people who have been coming to our meetings. Why you ask?; because our numbers are up at the meetings and there seems to be a good feeling among those who are there. That's not to say that we have to forsake our old friends, because that's what the RED is all about, but just make some new ones and invite them to be part of your circle. Is this starting to sound like the Gospel of Ron again? Well, I would hope so and would like to think maybe its working. At the next meeting in Vallejo do make a point to meet just one person who you do not know, and with this, we just might grow this organization one member at a time.

I do appreciate the good spirit that I have felt in the last few meetings and also appreciate those who have stepped forward to run for office for this coming year. There will be elections at this meeting and we have a full list of candidates so be there and take part in your RED.

I would also like to say thanks to all of those who have volunteered their time and effort to keep this organization going over the years.

Next time lets talk contest! If you have any thoughts or ideas about this, or any other subject, please contact me. You can respond to me by e-mail, mail or telephone; all 3 methods are listed in the first column to the left.

CHIEF CLERK'S REPORT

BY PAT BOYLE

The Napa Valley Northern Model Railroad Club hosted the February 2003 meeting of the Redwood Empire Division. Nearly forty members and guests signed in at the fair grounds crowding in around the club layout. The RED members were invited to bring their trains and several took advantage of the opportunity to run on the Napa Valley Northern RR. Many were captivated by a camcorder mounted on a flat car touring the mainline. It gave everyone an engineer's view of the railroad and discovering lost items. Some of the spectators watched the monitor intently as the cam scanned the crowd as it moved around turns.

Sandwiches, brownies, cookies, and coffee were on offer by SHIRLY MENTZER and cold sodas from the club. Thanks to Shirly once again for providing for the starving army.

"Fishing in the Napa River" was the title of JOHN RODGERS' eyewitness docudrama presented with films and rare rye wit. An SP employee at the time, John was able to provide interesting views and observations as he reviewed the events leading up to the actual dunking and the removal of the hulks from the river.

***** (five stars)

The display of "open loads" attracted over two dozen very diverse flat cars, gondolas, and hoppers with an even more diverse collection of loads. Lumber, timber, pipes, telephone poles, tractors, machinery, tarpaulin covered open loads, a hopper load of a mysterious substance and the aforementioned camcorder. The cars showed great craftsmanship,

crafty invention, or were unusual crafts. Thanks to the displayers for sharing.

The nominations report was presented by ED ZAKARECKIS and it actually contained names this year and one office had TWO contenders. The election will conclude at the RED May 10 meeting.

The BellennaBay Railway & Navigation Co. (BBR&N) was open after the meeting. It is an annual event for many RED members and HAROLD MENTZER did not disappoint the railfans, inspectors, and tourists. Many of the little white cardboard placeholders that so nicely showed size and proportion had been replaced by wonderfully crafted buildings. Some visitors seemed to be at a throttle as the timetable was tested by operations. Our thanks to Harold for his hospitality.

The Door Prize winners were:

GUS CAMPAGNA N & W hopper
GLEN JENSEN PFE mech reefer
DAVID GRUNDMAN New Hope
&

Ivyland box car
RON PLIES Great Northern gondola
TOM BUTLER box car
DON CABRALL Rainbow Route
SG&N VHS
HART CORBETT Georgetown
Loop VHS
PAT BOYLE NWP 2003 calendar

and the SPECIAL door prize, a one year subscription or renewal to a modeling or RR magazine of their choice, was won by:

MARK GRANADOS of Roseville who selected "Model Railroading" for his year's subscription and remarked, "It's the only one I don't take!"

NOMINATIONS REPORT

BY ED ZAKARECKIS

Nolan Alexander's Candidate Statement

Ten years ago I had to withdraw from active participation in RED events due to personal issues. Those times are behind me now and in keeping with my promises to myself and my friends in model railroading, I'm back and ready to take an active role in RED activities again. To accomplish this goal I've tossed my hat into the ring as a candidate for Superintendent. RED is the NMRA at the grass roots level and is the most likely direct contact that most members will have with the organization. I have a few ideas of my own about how to do that and I'm also interested in ideas from the membership. Some of us come to RED meets for the social outing and others come for the trains. If elected, I'll take on the responsibility of trying to satisfy both groups with interesting programs and meeting sites. I hope I'll see you at the next meet. Until then – Happy Model Railroading

Patrick (Pat) Boyle's Candidate Statement

Returned to the hobby a year or so before retiring from the college in Santa Rosa in 2000. CVL (the HO modular group) was attractive and I am active with them and their public displays. I joined NMRA and RED and found the participation informative, enjoyable and valuable. When there were no nominees for the 2001 RED election, I volunteered to serve and was appointed chief clerk. It just was my turn to give back some time and energy to the organization that had been so helpful to me. I hope to be able to contribute as superintendent, if elected.

THINK SMALL

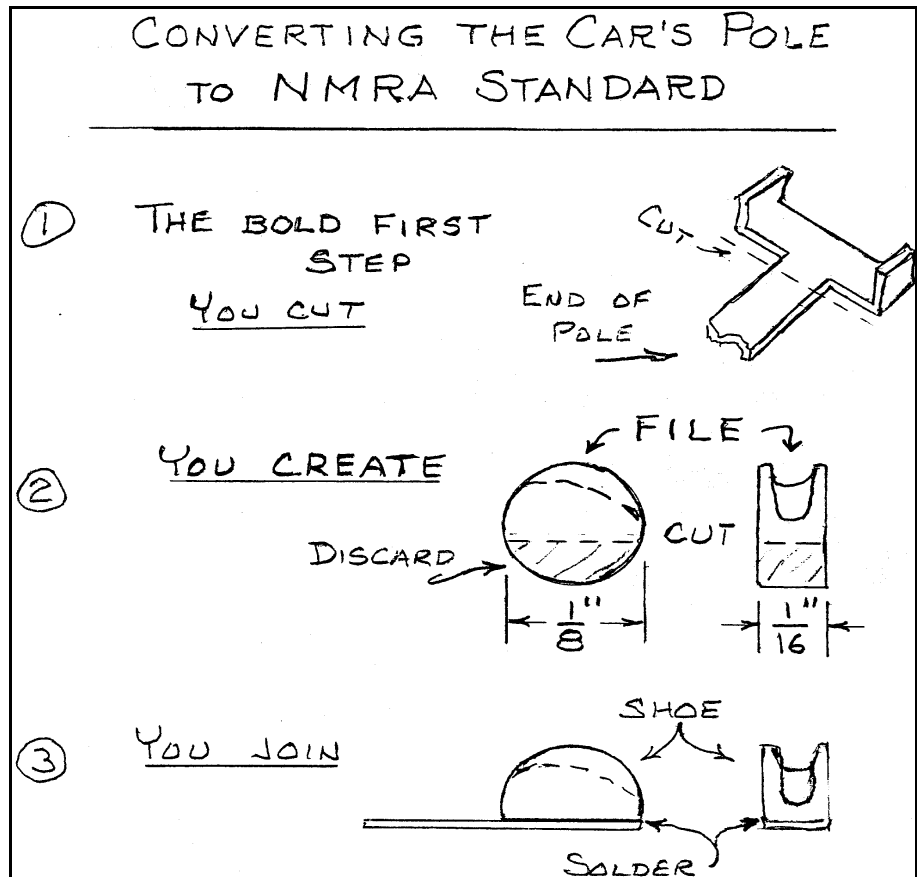
TROLLEY NICHE II

Did February's THINK SMALL bend your thinking toward cars that reach up to an overhead wire for electrons? Is conquering the minimum radius dragon important to you? I said the path to the trolley niche is paved and easy. However, the road signs are scarce. My mission today is to point the way.

Once in a while you see trolley articles in the major magazines. Often the overhead is cosmetic or missing with two-rail power substituting for the real thing. This is a kiss without a hug in my book. If trolleys tempt you, look through a copy of *Trolley Talk* or *Traction & Trolleys Quarterly*. The niche manufacturers find RMC and MR too pricey. Trolley stuff is available and advertised in the trolley publications.

My 2002 Walther's Catalog lists the IHC or AHM four-wheeler that I favor as a first car. This basic "Bobber" has been around for years. It is a good runner and has a working trolley pole easily modified to NMRA Standards. At train shows or swap meets look for the Yugoslavian four wheeler with "Downtown" or such on its side. Budget \$25.00 and you will come home with a car and change.

All the little four wheeler needs is a simple modification of its trolley pole; an easy job. Blow the dust off your NMRA Standards binder and turn to S-5. The wheel (rotating or dummy) at the end



of the pole is specified to be $\frac{1}{8}$ " diameter by $\frac{1}{16}$ " wide. We THINK SMALL folks think SIMPLE. Just: Cut, Create and Join. Grab a $\frac{1}{8}$ " round brass rod in your vise. Make good use of those little files in your tool box; then slice off $\frac{1}{16}$ ". If your first attempt is a dud try again. The unit cost of $\frac{1}{16}$ " of rod is not much. Remember, fabricating small parts is always easier when you have a handle - cut last. Follow the three simple steps and you will have a working pole that will follow the trolley wire like a hound dog tracking a rabbit.

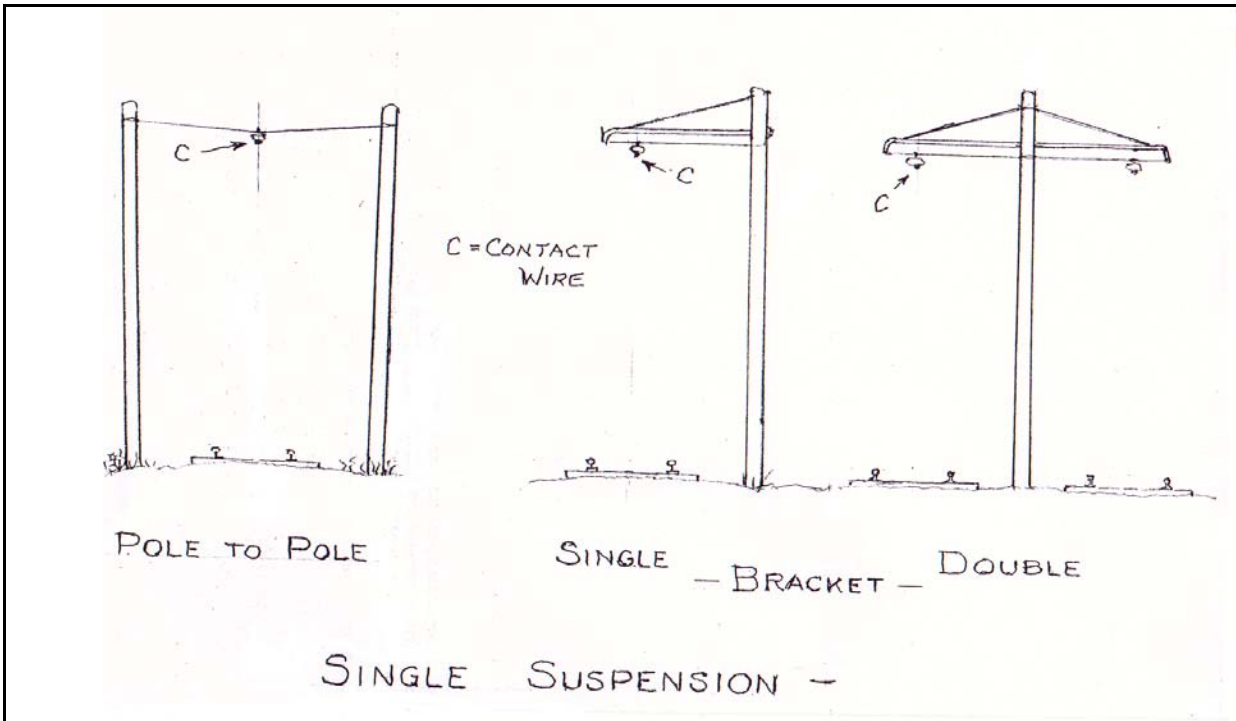
A trolley's pole is only functional when it glides along in contact with an energized overhead wire. Standards S-5 and S-6 in that NMRA binder are our guide for gauge and height above rail of the

contact wire plus minimum clearance to the side and between tracks on curves and tangents. In the standards we have valuable guidelines worthy of study

Full size trolleys run on a lethal 500 volts or more above ground. For obvious reasons the contact wire and feeder cables are insulated from everything else in the overhead. I remember working for Ma Bell in San Francisco. PG&E, Ma Bell and the street railway shared the same poles. We were VERY careful when we climbed past the trolley feed cables. On foggy mornings you could get quite a jolt from leakage current if you stretched too far when climbing up or down the pole. We THINK SMALL folks run our cars on 12 volts or less. We can carry full trolley voltage on all of our overhead. Our little people are

(Continued on page 5)

(THINK SMALL Continued from page 4)



plastic - electric shock is not a worry. Metal poles are a convenient path to get power to the overhead contact wire. Most folks opt for a continuous overhead with any sectioning being accomplished with gaps in the rails. Insulators in the model overhead are almost always just cosmetic.

Street car and interurban systems were usually short of capital. They developed simple (cheap) support systems to hold that trolley wire a proper 20 or 21 feet above the rails. Support poles could be either wood or steel. Whenever possible, the suspension messenger would be attached to a shared supporting structure. Street railways at times had support cables for the contact wire attached to buildings along the street, if the owner asked less for the attachment than a pole would cost. Heavy Electric Railroads had elaborate support structures at times for their catenary overhead. Such fancy supports for the hot wire above the rails can

keep a dedicated modeler busy for years. However, the humble trolley car asks for much less. Single Suspension is SIMPLE !

Watch for TROLLEY III in the next CALLBOARD. Building overhead is not hard if you build simple Single Suspension. I will discuss where you can find the material needed, construction aids and the simple design for overhead that I used. Perhaps you saw the overhead on my Two-by-Four Trolley loop at the Sebastopol Train Show. Meanwhile, blow the dust off your NMRA Standards binder and

THINK SMALL TROLLEY.

BILL WILLIAMS The Ancient One



EDITOR'S NOTES:

Future CALLBOARD schedules are as follows:

July-September CALLBOARD Staff Meeting: 7 PM, June 24
Text Deadline: July 1
Mailing: July 15
Meeting: August 1, 2 & 3

October- December CALLBOARD Staff Meeting: 7 PM, October 7
Text Deadline: October 14
Mailing: October 21
Meeting: November 9

Submit all articles, calendar items, classified, and/or comments to:

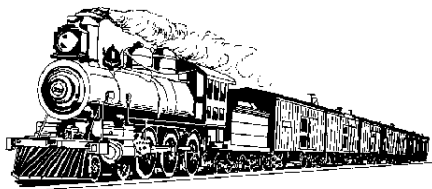
Editor, 240 Chase Street,
 Sonoma, CA 95476
 or send it by e-mail to:
 jrolston@pacbell.net

Send address corrections to:
PCR, 530 Fig Tree Lane
Martinez, CA 94553

CLASSIFIED ADS

This is where we run classified ads from members to members. There will be no charge for Redwood Empire Division members to place an ad here. Non-members will be asked to pay a nominal charge of \$2.50 for each 4 lines.

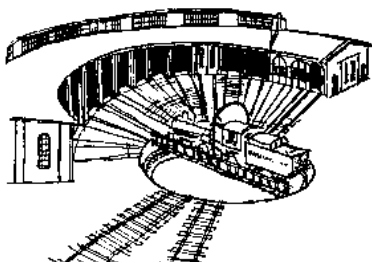
**YOUR
FOR SALE
OR WANTED
ADD
GOES HERE**



MEMBERSHIP REPORT BY MIKE McSWEEN

Welcome aboard to new Redwood Empire members:

Ronald Perkins	Vacaville
Thomas Marshall	Kelseyville
Ivan Jump	Santa Rosa
Ed O'Connell	Eureka
Louis Painter	San Rafael



Many of the art items used in this newsletter are courtesy of Ken Houghton Rail Images or came from the website:

www.rhistorical.com

FULTON STATION

Home

of the

South Fulton Sipping and Switching Society
Model Railroad Supplies, Books and Antiques

HOURS:

Monday – Friday: Noon to 6:00 PM
Saturday: 11:00 AM to 5:00 PM
Sunday: 12:30 PM to 4:30 PM

4754 Old Redwood Highway, Suite 454

In The Larkfield Shopping Center

(Mailing address: PO Box 38)

Santa Rosa, California 95403-1408

(707) 523-3522 (Phone)

PLAN TO ATTEND THE AUGUST RED MEETING

RED will be hosted by the Eel River Valley Model Railroaders of Ferndale on Friday, Saturday and Sunday August 1, 2 & 3. We'll meet at the Best Western Inn in Fortuna on Friday night for an evening of slides, films, videos and fellowship beginning at 7:30 PM. On Saturday there will be a full day of layout tours ending with a banquet at the Victorian Village Inn in Ferndale. A special program is planned for the evening. On Sunday morning we will be meeting for breakfast at the old Samoa Cookhouse. This is a old cookhouse for the loggers and lumber mill workers of the area that is now open to the public. The rest of the day will be spent visiting different layouts and logging exhibits.

A block of rooms are being held at the Best Western Country Inn in Fortuna, CA. The cost is \$75.00 per night for a non-smoking king or 2 queen beds. Their reservations phone number is (800)679-7511. They will hold this block of rooms until July 4. Tell them you are with the Redwood Empire Division. This is a very popular inn and these rates are a lot lower than their normal rates for the middle

of summer. The cost of the Saturday dinner banquet will be \$25.00 (+ tax & gratuity) per person; the choice's are Grilled New York Steak, Seared Ahi Pepper Steak and Pasta Primavera. Appetizers, house salad, dessert, coffee, tea, and iced tea service are included. The breakfast at the Samoa Cookhouse will be \$8.75. Please make reservations for the banquet and the breakfast by notifying Ron Plies; contact information is listed on page 2.

For those coming from outside of the area you might like to make this part of your vacation. This area is the beautiful Redwood country of Northern California, a vacation get away of choice for many Californians and people from all over the world. Not only do we have the Redwoods, but also miles of unspoiled beaches and open country. If you travel just north of here you will find the beautiful Oregon Coast with its many attractions. So plan to come up, be a part of this year's RED summer event and stay a while. If you stay until the following week, you could even help run the Eel River Valley model railroad layout during the Humboldt County Fair Aug. 7-17. Please visit our web-page at:

www.eelrivervalleyrr.org

Redwood Empire Garden Railway Society, No. 1 gauge, various scales. If you are interested call Don Herzog (707) 823-3023 (please let the phone ring) or Terry Strom (707)526-0820.

Napa Valley Model Railroad Club, HO layout. Meets Fridays 7:30 PM at Napa Fairgrounds, 575 Third St., Napa. For information call: Clubhouse (707) 253-8428 or Ron Rogers (707)224-4040 or John Rodgers (707)226-2985.
www.nvmrc.org

Lake County Model Railroad Club, HO modular. Meets Tuesday at 7:00 PM in the old National Guard Building at the Lake County Fairgrounds on Martin Street, Lakeport. Call John Grutzmacher (707)279-8026 or Ron Zawerucha (707) 275-2875.

Coastal Valley Lines, HO modular. Meets 1st Thursday of the month at 7:00 PM at Sam's For Play Café, 2630 Cleveland Ave., Santa Rosa. Call Brad Squires (707) 568-4298 or Don Hanesworth 823-9615
<http://home.pacbell.net/jrolston/>

Solano Rail Rats, HO Scale For information call John Leins (707)422-8266

CLUB SCHEDULES

Vallejo Model Railroad Club meets each Wednesday and Friday evenings, starting at 7:00 PM in the Civic Building, Solano County Fairgrounds, 900 Fairgrounds Drive off I-80 and Hwy. 37, in Vallejo. Enter via Sage Street/ Gate #1. The Club operates both HO and N scales. Information: (707)643-1809 (with answering machine) at the club.

Sonoma County Model Railroad Society. SCMRS is relocating. Contact Dave Gibbons at (707)526-2057.

Humboldt Bay & Eureka, HO layout, Eureka, CA. Contact David Berriman, P. O. Box 915 Arcata, CA 95518. (707)825-7689.

Bay Area S Scalers. Contact Lee Johnson at (925)943-1590.

North Coast Narrow Gaugers
www.ncng.org

NPC Operators An On3 operating group meets the first Tuesday of each month. Contact Steve Skold (707)539-1782 or e- mail SandCSkold@aol.com

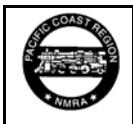
Mendocino Coast Model Railroad &

Historical Society, a Fort Bragg area group that promotes the hobby of model railroading. Construction underway of a historically accurate layout depicting the California Western (Skunk) from Ft. Bragg to Willits. Contact Philip Miller at (707)937-3605

Redwood Empire Live Steamers. A new group is forming with the goal to build a 7 1/2 inch track facility in a local park. For information, call Ann or Don at (707)578-4414 or write to PO Box 4594, Santa Rosa, CA 95402
www.santarosals.org

North Coast Live Steamers, a group, from the Fort Bragg-Willits area, that promotes the hobby of large-scale railroading and other steam related history. Contact Bill Shepard at (707)961-0329.

Eel River Valley Model Railroaders, HO Scale layout. Meets each Friday evening at 7:30 P.M. at the Humboldt Co. Fair Grounds, Ferndale, CA. Write to P O Box 950 Fortuna CA 95540 or contact Ron Plies at rlplies@cox.net or (707)725-9063 more information.
www.eelrivervalleyrr.org



MEMBERSHIP APPLICATION 1/03
REDWOOD EMPIRE DIVISION (RED)
PACIFIC COAST REGION (PCR)
NATIONAL MODEL RAILROAD ASSOCIATION (NMRA)

LAST NAME: _____ FIRST NAME: _____

ADDRESS: _____

CITY: _____ STATE: _____ ZIP: _____

TELEPHONE #: _____ NMRA # (if a member): _____

I want to become a member of the Redwood Empire Division in the Pacific Coast Region of the NMRA. I have checked below the type of membership I desire and have enclosed the proper amount in a check payable to PCR-NMRA. I understand that membership in the RED/PCR requires membership in the NMRA.

- | | |
|--|---|
| <input type="checkbox"/> RED/PCR and NMRA for one year at \$51.00 | <input type="checkbox"/> RED/PCR only (requires NMRA membership # above) at \$6.00 |
| <input type="checkbox"/> RED/PCR and NMRA for five years at \$240.00 | <input type="checkbox"/> RED/PCR only five years (requires NMRA # above) at \$25.00 |
| <input type="checkbox"/> RED/PCR and NMRA affiliate at \$29.00
(No NMRA monthly <i>Bulletin</i> magazine) | <input type="checkbox"/> Check here if this is a renewal PCR #: _____ |
| <input type="checkbox"/> RED/PCR and NMRA Youth (under age 20) at \$36.00
Date of Birth: _____ | |

Life memberships in both the NMRA and RED/ PCR are available. Contact Member Services Chairman for actuarial quote. Send application form and remittance to : PCR Member Services, 530 Fig Tree Lane, Martinez, CA 94553. Please allow 3-6 weeks for processing your application.

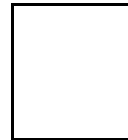
COMING DOWN THE LINE

- April 23 -27: **Pacific Coast Region Annual Convention** at the Crowne Plaza Hotel in Pleasanton. Information and a registration form is in the PCR *Branchline* newsletter. The PCR web site is www.pcrnmra.org
- April 26 & 27: **Humboldt Bay & Eureka Model Railroad Club** spring open house, noon to 5 PM both days. Located at 7th & A Streets, Eureka.
- May 3 & 4: **Coastal Valley Lines** train show at Day Under The Oaks, Santa Rosa Jr. College, Santa Rosa.
- Saturday May 10: **Redwood Empire Division** annual meeting at the Vallejo Model Railroad Club combined with a swap meet. Details start on page 1.
- May 17 & 18: **GATS** train sale at the Marin Center, San Rafael.
- May 25: **Redwood Empire Garden Railroad Society** meet at Don & Becky Herzog's Miniature Plant Kingdom in Occidental., 11 AM to 4 PM.
- June 1: **Coast Division** meet at the School for the Deaf, Fremont. Contact Rod Smith at (510)657-3362.
- June 25-29: **Humboldt Bay & Eureka Model Railroad Club** operating their modular layout at the Redwood Acres Fair, Harris Street, Eureka.
- June 29: **Redwood Empire Garden Railroad Society** meet at Winston & Lois Perry's home in Sebastopol, 11 to 4 .
- July 14-19: **NMRA National Convention** in Toronto, ON, Canada.
- August 1, 2 & 3: **Redwood Empire Division** meet in the Fortuna and Eureka area. Some details are on page 6.
- November 9: **Redwood Empire Division** meet in Santa Rosa.

* If your club has an event coming up, contact the Editor for inclusion in this list. *

CALLBOARD

John Rolston, Editor
240 Chase Street
Sonoma, CA 95476



FIRST CLASS