



## Coast Dispatcher June 2009

Coast Division Web Site: <http://www.pcrnmra.org/coast>

Pacific Coast Region Web Site: <http://www.pcrnmra.org>

### Welcome to the Coast Division of PCR Here are our next few events.

#### Division Meet

June 7, 2009

Computer History Museum, 1401 N. Shoreline Blvd, Mountain View, CA

(map on last page)

- 9:00 AM ..... Doors open. Free Door Prizes. Buy Raffle Tickets.
- 9:30 AM ..... Get Auction Cards.
- 10:00 AM ..... Show and Tell
- 11:00 AM ..... Model Railroad Roundtable moderated by Jerry Littlefield
- 12 Noon ..... Silent Auction ends, Business Meeting Begins. Live Auction starts 5 minutes after Business Meeting ends.
- 1:30 PM ..... Model/Photo Contest Results – afterward Auction continues.
- 3:30 PM ..... Timesaver Results, Raffle – afterward Auction continues if required.

9:30 AM – 1:15 PM:

Photo Contest: Trains in Action

Model Contest: Structure, Display/Diorama, Self-Propelled Cars & Traction

Allen Fenton Timesaver Switching Contest (until 3:15)

#### Layout Tours

June 13 and 14, 2009

North East Bay

Details on Page 4.

#### Division Meet

September 13, 2009

Buchser Middle School, 1111 Bellomy St., Santa Clara, CA

- 9:00 AM ..... Doors open. Free Door Prizes. Buy Raffle Tickets.
- 9:30 AM ..... Get Auction Cards.
- 10:00 AM ..... Show and Tell
- 11:00 AM ..... Model Railroad Roundtable moderated by Jerry Littlefield
- 12 Noon ..... Silent Auction ends, Business Meeting Begins. Live Auction starts 5 minutes after Business Meeting ends.
- 1:30 PM ..... Model/Photo Contest Results – afterward Auction continues.
- 3:30 PM ..... Timesaver Results, Raffle – afterward Auction continues if required.

9:30 AM – 1:15 PM:

Model Contest: Steam Locomotives, Diesel & Other Locomotives, Passenger Car

Photo Contest: Railfans I Have Known

Allen Fenton Timesaver Switching Contest (until 3:15)

Coast Call Board

Director: Rod Smith  
Ph: 510-657-3362  
email: [railgeezer@aol.com](mailto:railgeezer@aol.com)

Superintendent: Mark Schutzer  
Ph: 650-369-0481  
email:  
[mark.schutzer@sbcglobal.net](mailto:mark.schutzer@sbcglobal.net)

Chief Clerk: Darrel Dennis  
Ph: 510-303-3431  
email:  
[u8444p@comcast.net](mailto:u8444p@comcast.net)

Paymaster: Bob Ferguson  
Ph: 925-228-6833  
email: [BobPCRC@aol.com](mailto:BobPCRC@aol.com)

Achievement: Kermit Paul  
Ph: 925-935-1859

Auction: John Marshall  
Ph: 925-461-0206  
email: [ntrak@sbcglobal.net](mailto:ntrak@sbcglobal.net)

Auction Accounting:  
Bill Swindell  
Ph: 925-372-6996  
email: [bill\\_swindell@value.net](mailto:bill_swindell@value.net)

Clinics: John Marshall  
Ph: 925-461-0206  
email: [ntrak@sbcglobal.net](mailto:ntrak@sbcglobal.net)

Publisher, Coast Dispatcher:  
Tom Vanden Bosch  
Ph: 650-369-8305  
email:  
[tom-marian@attglobal.net](mailto:tom-marian@attglobal.net)

Editor, Coast Dispatcher:  
Tom Crawford  
Ph: 510-790-0371  
email:  
[Crawford.Tom@sbcglobal.net](mailto:Crawford.Tom@sbcglobal.net)

Roundtable Facilitator:  
Jerry Littlefield  
Ph: 925-837-4309  
email: [jkittle@ix.netcom.com](mailto:jkittle@ix.netcom.com)

Model Contest: John Sing  
Ph: 650-372-0765  
email: [singj@us.ibm.com](mailto:singj@us.ibm.com)

Nominations: Dave Connery  
Ph: 925-735-0134  
email: [deconnery@aol.com](mailto:deconnery@aol.com)

Photo Contest: Pat La Torres  
Ph: 510-317-7456  
email: [duhnerd@pacbell.net](mailto:duhnerd@pacbell.net)

Publicity: Steve Wesolowski  
Ph: 408-252-4192  
email: [swezz@comcast.net](mailto:swezz@comcast.net)

Quartermaster: John Marshall  
Ph: 925-461-0206  
email: [ntrak@sbcglobal.net](mailto:ntrak@sbcglobal.net)

Registration: Randy Homan  
Ph: 408-201-2589  
email: [rhoman3@sbcglobal.net](mailto:rhoman3@sbcglobal.net)

Switching Contest:  
Mark Schutzer  
Ph: 650-369-0481  
email:  
[mark.schutzer@sbcglobal.net](mailto:mark.schutzer@sbcglobal.net)

Web Master: John Sing  
Ph: 650-372-0765  
email: [singj@us.ibm.com](mailto:singj@us.ibm.com)

Meeting Sites:  
Steve Wesolowski  
Ph: 408-252-4192  
email: [swezz@comcast.net](mailto:swezz@comcast.net)

Layout Tours: Dave Parks  
Ph: 650-961-7644  
email:  
[Bearwestern@comcast.net](mailto:Bearwestern@comcast.net)

Membership: (vacant)

**In This Issue**

Upcoming Events .....	1
Call Board.....	2
Super Notes.....	3
The Director's Cut.....	3
Layout Tours .....	4
Volunteer Request .....	4
June Show And Tell.....	5
Publicity Report .....	5
Registrar's Report .....	6
Model Contest .....	6&7
Show and Tell.....	7&8
Photo Contest .....	8&9
Upcoming Contests.....	9
Meet Location Map .....	10

The pictures in the Dispatcher are very small and are in Black and white. To see them in full color and in a reasonable size, you need to get the E-Dispatcher, which is distributed by E-mail. It is also available on the Coast Division Website. <http://www.pcrnmra.org/coast/>

You may subscribe to the E-Dispatcher for free by contacting Tom Crawford at [Crawford.Tom@sbcglobal.net](mailto:Crawford.Tom@sbcglobal.net)



**CFC 12286**

**Federal Employees!** For the first time, the National Model Railroad Association (NMRA) will be included in your annual Combined Federal Campaign (CFC) to be conducted at your workplace. To offer the NMRA your support please designate #12286 on your CFC contribution form.

## ***Super Notes***

### ***By Mark Schutzer***

This is my first edition of the Super Notes as your new Superintendent. I want to start by thanking both John Marshall and Tom Crawford for their past four years of service to the Coast Division. They left some big shoes to fill and Darrell and I will do our best to carry the tradition forward.

I'm writing this as I just returned home from the Rails Across the Bay convention in Fremont. What a fantastic convention! Please join me in congratulating Tom Crawford and his committee for doing a fantastic job of organizing and executing a very memorable convention. In my opinion PCR conventions are actually better than national conventions. Each year the number and breath of first rate clinics get better and better. This year Jim Long put together a clinic program that featured 57 different unique clinics that covered all aspects of the hobby. David Parks and his team lined up 35 different layouts that were open for touring during the convention. The steam train ride through Niles Canyon was fantastic, the weather was perfect and we even had a big Bobcat come out to watch us go by! And don't forget about the speeder rides, Posco Tour, Op sessions, SIG tracks, Non-rail activities, and the contest room. All in all it was a very enjoyable and busy 5 days.

I hope to see all of you at the June 7th meet at the Computer History Museum. We have a special "show and tell event" at the meet and I would like to encourage you to bring some of the projects you are working on to share with others. If you have something you would like to show off please bring it along, finished or not. We had a good response at last year's "show and tell event", this year lets fill up the whole alcove area next to meeting room with projects.

See you all at the meet.

## ***The Director's Cut***

### ***By Rod Smith***

The PCR Board met April 15 in Fremont. Our treasurer reported we are financially sound, though impacted by the economy. The relationship between PCR and The 21<sup>st</sup> Century Ltd., who are PCR's designated 2011 NMRA Convention group, was clarified.

Ron Plies and Pat LaTorres were reelected for another two years as President and Vice-President respectively. Tom Crawford has accepted the position of PCR Secretary, most recently held by Rich Kolm who passed away on February 28. Larry Altbaum continues as Treasurer.

The PCR Member of the Year award was presented to Chuck Mitchell who is one of our auctioneers as well as a stalwart of the auction committee. He is also the PCR Education Committee Chair and has served on many convention committees, some as General Chairman. It is difficult to select only one among the many Coast members deserving of this award. Congratulations Chuck.

The Rails Across The Bay convention was well attended and quite successful. If you missed it, you missed a good one. Plan next year to be in Sparks, Nevada for "Silver Rails – 2010", April 28 to May 2. They think they can better ours! Let's see...

## **Coast Division Layout Tours**

### **By Dave Parks**

#### Coast Tours 2009 Schedule

The 2009 Coast Tours will be the weekend following the Coast Division quarterly meetings. The preferred distribution of tour maps is on-line and free via links from the Coast Division <http://www.pcrnmra.org/coast/> web site. Hard copy map sets are available only by pre-ordering from a member of the Coast Tours committee (contact below). The hard copy map packet cost is five dollars per tour weekend and distribution is at the Coast Division meeting preceding each tour weekend.

June 13 – 14, 2009 - North East Bay - Andy Schnur coordinator.

September 19 – 20, 2009 - South East Bay - Bob Osborn coordinator.

September 27, 2009 North Beyond the Bay - Ernie Simard coordinator.

December 12 – 13, 2009 - North West Bay - Pete Cressman coordinator.

North Beyond the Bay includes Napa, Solano and Sonoma Counties. Other tours outside the Coast Division boundaries are being planned. Please let us know if you would like to have your layout on a tour. There are no minimum layout standards, just an accurate description of what you have.

#### Coast Tours Coordinators:

Chair	David Parks	<a href="mailto:bearwestern@comcast.net">bearwestern@comcast.net</a>	(650) 961-7644
North East Bay	Andy Schnur	<a href="mailto:schnurae@netzero.com">schnurae@netzero.com</a>	(925) 283-4476
South East Bay	Bob Osborn	<a href="mailto:bob@cmrailroad.com">bob@cmrailroad.com</a>	(925) 484-4136
	Don Marenzi	<a href="mailto:donmarenzi@aol.com">donmarenzi@aol.com</a>	(510) 794-3469
North West Bay	Pete Cressman	<a href="mailto:gabi2pete-friends@yahoo.com">gabi2pete-friends@yahoo.com</a>	(415) 641-9379
South West Bay	Steve Williams	<a href="mailto:spwilliams@gmail.com">spwilliams@gmail.com</a>	(408) 857-6787
North Beyond the Bay	Ernie Simard	<a href="mailto:esimard@yahoo.com">esimard@yahoo.com</a>	(707) 762-9163
Monterey Bay/Salinas	Robert Bowdidge	<a href="mailto:bowdidge@earthlink.net">bowdidge@earthlink.net</a>	(408) 723-1925

## **Volunteers Needed**

### **By Pat LaTorres**

The Coast Division is looking for a few volunteers to help out at our quarterly meets. The first would be someone to step in and in time take over the Photo Contest. This is actually a pretty easy job, but Pat LaTorres has been doing it since 2004 and is looking for a bit of a break. He'd be quite willing to help get you started and provide some help as needed. Just get with Pat at the next meet and he'll work with you. The second would be someone to work with Randy Homan at the Registration Table and let him have some time to catch a clinic now and then. Again, just talk with Randy when you register on the way into the meet and set things up between you. Finally, Pat is also looking for someone to help with the Auction Cards. This position would sometimes require you to arrive early and stay until the final wrap up of the meet, but the load would be split between two people so it wouldn't be every meet. Just get with Pat when you pick up your card at the next meet, or feel free to contact him at "duhnerd@pacbell.net". Please remember, the more folks working a project, the less work any one person has to do.

**Model Railroad Appraisals  
Estate Planning and Disposal  
John Marshall  
8211 Moller Ranch Drive  
Pleasanton, CA 94588  
Ph: 925-461-0206 Fax: 925-461-9061  
Email: [ntrak@sbcglobal.net](mailto:ntrak@sbcglobal.net)**

**Tom's Trackside Trains**  
1675 Rollins Rd. Suite B-1  
Burlingame, CA 94010  
Tom Van Horn  
[tomstracksidetrains.com](http://tomstracksidetrains.com)

**Hours:**  
Wed & Fri: 12-8 Thu: 12-5      Phone (650) 692-9724  
Sat: 12-6; Sun: 12-3      Fax (650) 692-9725

## ***June Meet Show and Tell***

***By John Marshall***

Last June we had a show and tell, and it worked so well that we are doing it again. For those who don't remember what a show and tell is, read on.

Show and Tells are nothing new to the hobby. They are used in other divisions and regions and at national conventions as well. Think of them as having 10 or 20 mini clinics available for you to attend.

Now, who should consider having a "Show and Tell" table at the June meet? Ok, here are my thoughts on that. "Is there one aspect of the hobby that really interests you?" , "Do you collect something unique?" "Do you model a specific prototype?" "Is your club looking for new members?" "Is your special interest group (SIG) looking for new members?" All of these are candidates for a table at the June meet. The biggest asset that the NMRA has is its members and the accumulated knowledge that those members have. We are blessed by the fact that so many of our members also feel an obligation to share that with their fellow members.

Each of us is an overflowing jar of knowledge about some aspect of the hobby that interests us. What is your favorite Railroad and why? What is your favorite type of rolling stock, passenger train, structure? Those are all good topics. Do you love to chase trains, take photos of trains, collect buttons, switch locks, lanterns or even RR related postage stamps? Have you found some interesting things that help you make scenery? Have you found some unique source for unusual tools that help you in your modeling? Those are all good topics. This is your chance to tell your fellow modelers about it. Chances are, you will find others who share your interest. Here us your opportunity to have the floor.

If you are interested in participating, please let John Marshall know by e-mail or by phone and I will reserve you a table and have a sign for your topic. My contact information is listed in this copy of the Dispatcher.

## ***Reach Out and Invite a "New" Friend!***

***By Steve Wesolowski***

Now that our Rails Across The Bay PCR 2009 high speed train run is over after successfully running on the main line for several days last week, our usual fliers for the next Coast Division Quarterly meet at the Computer History Museum in Mountain View should be at your local train oriented hobby retailer.

Remember, it is Coast Division members like yourself voluntarily reaching out to "new" hobbyists who help grow our circle of local train lovers. If you are in a store and a "new" person happens to be there, please hand them a division meet flier and tell them how much fun you have meeting with other train enthusiasts. And, if they DO come to one of our meets, or you see another new face at meets, please go up to them and introduce yourself, and try to find out their interests & scales and also introduce them to others at the meet you know who share their interests and/or scales.

Speaking of volunteers, outreach and potential "new" member recruiting, at RATB another Coast member came up to me to ask what he could do to help Coast division. I think I convinced him to try being our Membership Volunteer, but I'll wait until our next issue, after he has officially assumed that role, to announce his name.

Meanwhile, as "de-facto"/acting Coast Membership Volunteer for some years, I've been coordinating our GATS & GTE train show Membership Recruiting table participation.

I want to thank Bennet Woll, Chuck Mitchell and James Eckman for manning our tables Saturday at the March GTE show at the Cow Palace, as I was unable to attend. Evidently, so many attendees stopped by, I understand we even ran out of some handouts, and they had many requests for NMRA info from attendees from outside Coast Division who came. Good work, guys, and thanks for volunteering.

Well, that's enough for now; Keep encouraging "new" modelers you meet to come to our meets. Thanks!



## **Registration Report** **By Randy Homan**

Attendance at the March 1<sup>st</sup>, 2009 meeting was very good for a March meeting with 106 attendees. Raffle income was \$181 and four badges were purchased for \$8.

The raffle income per attendee was \$1.78.

We had the following Raffle Prizes:

\$50.00 Gift Certificate from Tom's Trackside Trains

\$50.00 Gift Certificate from the Train Shop

We had the following Door Prizes purchased from Flying Fortress Hobbies, Gilroy, CA

Basic File Set (Medium Double-Cut)

Bottle of Labelle 108 multi-purpose Oil light

Tube of Labelle 106 plastic compatible Grease

Gorilla Grip Fold-Up Allen Wrench Set – Metric

Gorilla Grip Fold-Up Allen Wrench Set - Standard

Weathering Set– Sand, Light Sand & Mud

Weathering Set – Snow, Soot & Rust

And a donation by unknown member:

38" belt with buckle showing 2-8-0 steam engine

### Attendees

Coast Division 87

Daylight 2

Redwood 5

Sierra 5

Guest 4

First Time (Included in Guest Count) 4

Other 3

(1 from Southern California)

(1 from Pennsylvania)

(1 from Oregon)

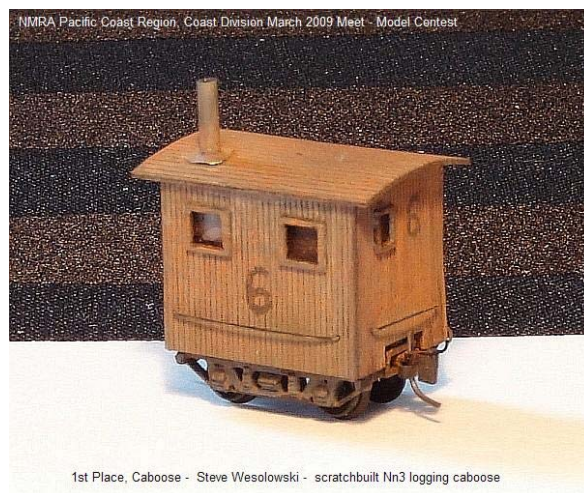
Total Attendees 106

## **Model Contest / Show Tell Report** **by John Sing**

We had another great turnout for the March 2009 Coast Division Model Contest / Show Tell / Photo Contest. As always, \*Thank You\* to \*all\* the participants who entered and put on such a good show for the rest of us.

By popular vote, here's the Model Contest awardees:

### **1st Place Caboose - Steve Wesolowski:**



### **2nd Place Caboose - Kenneth Martin:**



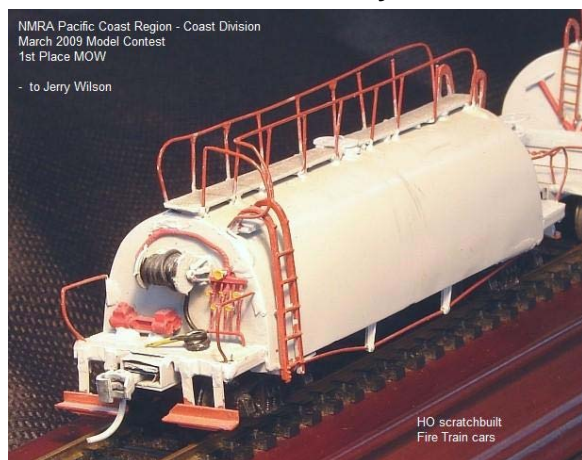
### **1st Place Freight Car - Andrew Merriam:**



### **2nd Place Freight Car - Bob Booth (1,100 individual parts):**





**3d Place Freight Car - Kenneth Martin:****1st Place MOW - Jerry Wilson:****2nd Place MOW - Andrew Merriam:****3d Place MOW - Bob Wirthlin, MMR****We had many more entries, including:****Steve Wesolowski:****Bob Wirthlin had seven other entries in MOW! Here's one of them:**

You can see all of the photos of our March 2009 Model Contest at our Coast Division Meet Report web site:

[http://www.pcrnmra.org/coast/contest/Contest\\_Mar\\_2009.shtml](http://www.pcrnmra.org/coast/contest/Contest_Mar_2009.shtml)

**Show and Tell**

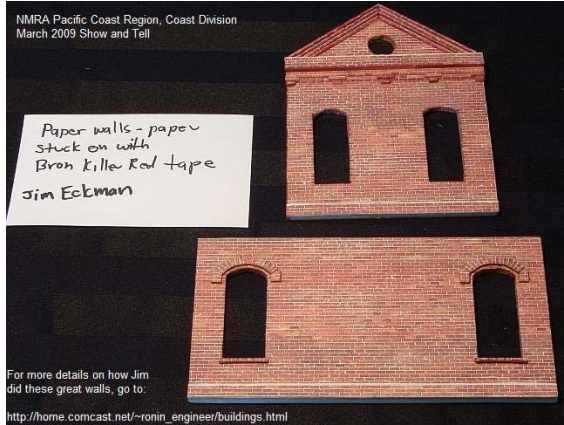
We continue to have great participation in the Show and Tell. Participants included:

**Gary Kruse:**



(Continued from page 7)

### Jim Eckman:



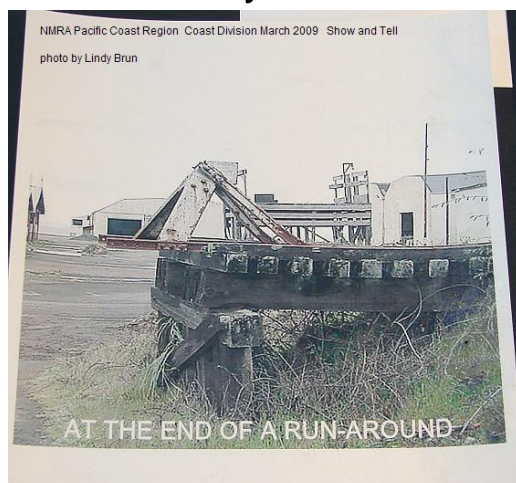
### Manuel Noriega:



### John Sing:



### Lindy Brun:



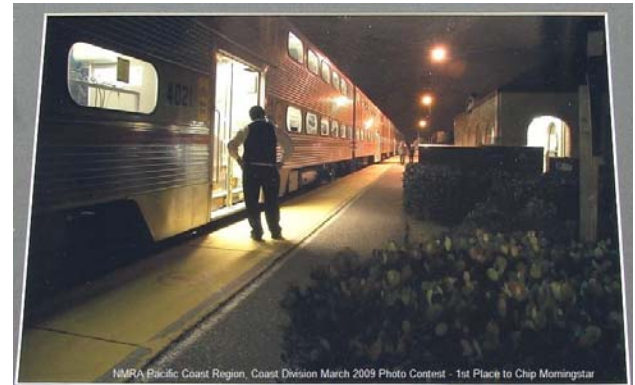
You can see all of the photos of our March 2009 Show and Tell at our Coast Division Meet Report web site:

[http://www.pcrnmra.org/coast/contest/Contest\\_Mar\\_2009.shtml](http://www.pcrnmra.org/coast/contest/Contest_Mar_2009.shtml)

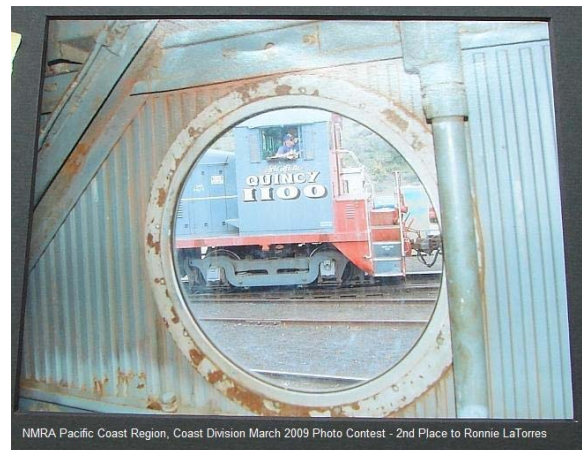
## Photo Contest

We also had excellent Photo Contest entries. By Popular vote, the awardees are :

### 1st Place: "Nighttime on CalTrain" Chip Morningstar:

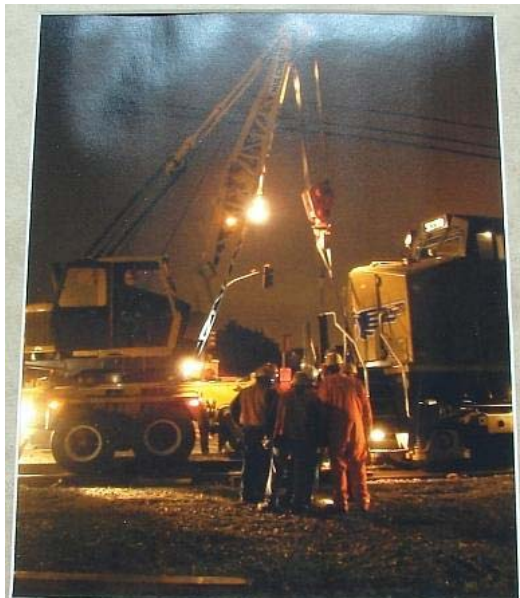


### 2nd Place: "Quincy switcher at Portola" Ronnie LaTorres:



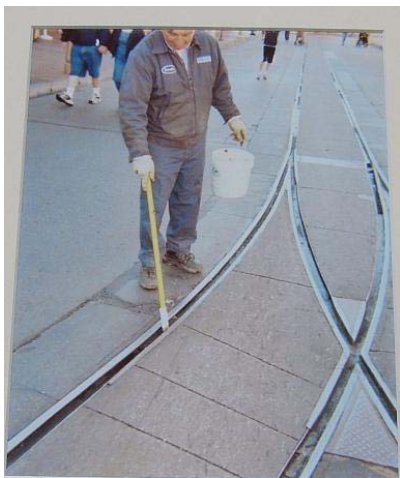


### 3d Place: "UP Derailment at Los Gatos" Steve Wesolowski:



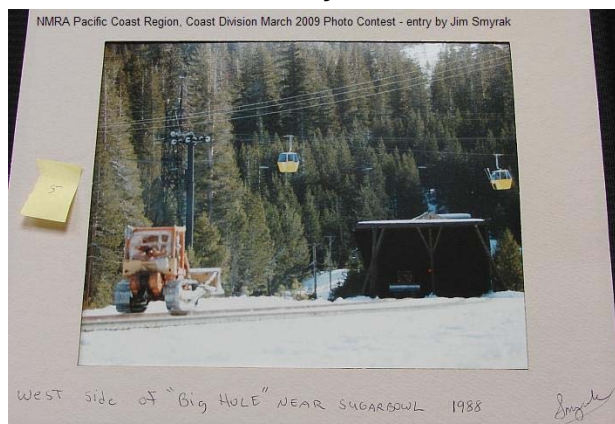
NMRA Pacific Coast Region, Coast Division March 2009 Photo Contest - 3d Place to Steve Wesolowski

We had excellent entries as well from :  
**Dave Loveless:**



NMRA Pacific Coast Region, Coast Division March 2009 Photo Contest - entry by Dave Loveless

### Jim Smyrak:



NMRA Pacific Coast Region, Coast Division March 2009 Photo Contest - entry by Jim Smyrak

West side of "Big Hole" NEAR SUGARHOLE 1988

### ***Upcoming Model Contest categories:***

Coast Division Model Contest categories are rotated annually according to the following schedule.

Therefore, the categories for the Coast Division Model Contest June 2009 are:

- June 2009: Structure,  
Display/Diorama,  
Self-Propelled Cars & Traction
- September 2009: Steam Locomotives,  
Diesel & Other Locomotives,  
Passenger Car
- December 2009: "Favorite Model" (open category)
- March 2010: Freight Car,  
Caboose,  
Maintenance of Way

### ***Show and Tell***

Our Show and Tell Table is open for anyone wishing to display - can be works in progress, completed models, anything you would like to share. Use your creativity, bring a model, and share with us your work and your pride and joy.

### ***Upcoming Photo Contest categories:***

- June 2009: "Trains In Action"
- Sept 2009: "Railfans I Have Known"

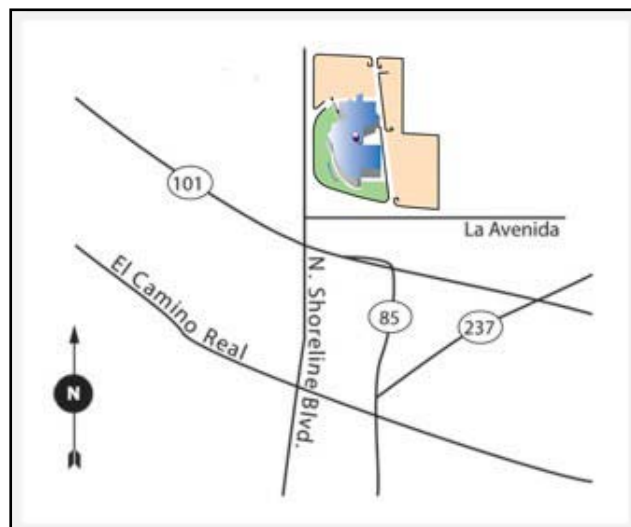
All photos should be matted (inexpensive, reusable mattes can be had at most art supply stores) and should be between 5x7 and 11x14 in size.

Results are determined by Popular Vote. Bring your photos early to get the early votes.

P.S. John Sing will be away on a vacation at the time the June 2009 Meet, so my helpers will man the Model Contest / Show and Tell tables for me.

We look forward to seeing you at the June 2009 Meet!

**The next meet will be on June 7, 2009 at the  
Computer History Museum 1401 N. Shoreline Blvd, Mountain View  
Details are on Page 1. Here is the map.**



**From San Francisco: Take US-101 South toward San Jose. Take Shoreline Blvd exit.  
Turn left onto Shoreline Blvd. Cross through intersection, Museum is on your right. You are there:  
Museum Entrance faces Shoreline Blvd.**

**From San Jose: Take Highway 101 North. Exit Shoreline Blvd. At the light, turn right onto N.  
Shoreline Blvd. Cross through intersection, Museum is on your right. You are there: Museum En-  
trance faces Shoreline Blvd.**

**Coast Dispatcher  
4337 La Cosa Ave  
Fremont, CA 94536**