



Coast Dispatcher December 2007

Coast Division Web Site: <http://www.pcrnmra.org/coast>

Pacific Coast Region Web Site: <http://www.pcrnmra.org>

Welcome to the Coast Division of PCR
Here is what we have planned for the next two meetings

December 2, 2007

Computer History Museum, 1401 N. Shoreline Blvd, Mountain View, CA
(map on last page)

9:00 AM Doors open. Free Door Prizes. Buy Raffle Tickets.
9:30 AM Get Auction Cards.
10:00 AM Clinic—Decoder Pro CV Programming by Jon Miller and Ogden Lamont (2 hours)
11:00 AM Clinic— Effective Operating Session by Dave Clemens
11:00 AM Model Railroad Roundtable moderated by Jerry Littlefield
12 Noon Business Meeting
1:00 PM Auction starts
1:30 PM Model/Photo Contest Results – afterward Auction continues
3:30 PM Timesaver results, Raffle – afterward Auction continues if required

9:30 AM – 1:15 PM:

Photo Contest: Trains in Action

Model Contest: Favorite Model (Open)

Allen Fenton Timesaver Switching Contest (until 3:15 PM)

March 2, 2008

Buchser Middle School, 1111 Bellomy St., Santa Clara, CA

9:00 AM Doors open. Free Door Prizes. Buy Raffle Tickets.
9:30 AM Get Auction Cards.
10:00 AM Clinic TBD
11:00 AM Clinic TBD
11:00 AM Model Railroad Roundtable moderated by Jerry Littlefield
12 Noon Business Meeting
1:00 PM Auction starts, Roundtable continues
1:30 PM Model/Photo Contest Results – afterward Auction continues
3:30 PM Timesaver Results, Raffle – afterward Auction continues if required

9:30 AM – 1:15 PM:

Photo Contest: Diesel Locomotives

Model Contest: Caboose, Freight Cars, Maintenance of Way

Allen Fenton Timesaver Switching Contest (until 3:15)

Coast Call Board

Director: Kermit Paul
Ph: (925) 935-1859

Superintendent: John Marshall
Ph: (925) 461-0206
email: ntrak@sbcglobal.net

Chief Clerk: Tom Crawford
Ph: (510) 790-0371
email: CrawfordT@ASME.org

Paymaster: Bob Ferguson
Ph: (925) 228-6833
email: BobPCRC@aol.com

Achievement: Kermit Paul
Ph: (925) 935-1859

Auction: Bill Burket
Ph: (408) 926-0331
email: wgbamthog@gmail.com

Auction Accounting: Bill Swindell
Ph: (925) 372-6996
email: Bill.Swindell@clorox.com

Clinics / Meet: John Marshall
Ph: (925) 461-0206
email: ntrak@sbcglobal.net

Publisher, Coast Dispatcher:
Tom Vanden Bosch
Ph: (650) 369-8305
email: tom-marian@attglobal.net

Editor, Coast Dispatcher:
Tom Crawford
Ph: (510) 790-0371
email: CrawfordT@ASME.org

Roundtable Facilitator:
Jerry Littlefield
(925) 837-4309
email: jkittle@ix.netcom.com

Model Contest: John Sing
Ph: (650) 372-0765
email: singj@us.ibm.com

Nominations: Dave Connery
Ph: (925) 735-0134
email: deconnery@aol.com

Photo Contest: Pat La Torres
Ph: (510) 317-7456
email: duhnerd@pacbell.net

Publicity: Steve Wesolowski
Ph: 408-252-4192
email: swezz@comcast.net

Quartermaster: John Marshall
Ph: (925) 461-0206
email: ntrak@sbcglobal.net

Registration: John Ameling
Ph: (408) 732-0684
email: JAmeling@comcast.net

Switching Contest: Mark Schutzer
Ph: (650) 369-0481
email: mark.schutzer@sbcglobal.net

Web Master: Kevin Hurley
Ph: 831-728-1934
email: khurley@pcrnmra.org

Meeting Sites: Steve Wesolowski
Ph: 408-252-4192
email: swezz@comcast.net

Layout Tours: (vacant)

Membership: (vacant)

In This Issue

Upcoming Events	1
Call Board	2
Superintendent' Report ..	3
Publicity Report	4
Clinic Report	5
Division Banquet	5
Registrar's Report	6
Model Contest	6,7 & 8
Timesaver	8
Photo Contest	9
Meet Location Map	10



See Page 3 for Convention Info

This issue has some good color pictures in it. To see them in all their glory, go to our website at <http://www.pcrnmra.org/coast>

The E-Dispatcher also has more information than we could fit in this 10 page format. Things included are bigger pictures, and more complete Registrar's and Photo Contest reports, all in color.

If you would like to get the E-Dispatcher, go to <http://www.yahoo.com> and then select Groups in the left column, and type in "Coast_Dispatcher" in the search box.

I want to personally thank John Sing for all his incredible work documenting the contests and providing me all of this input for the Dispatcher. He does the work. I just copy. Works for me!

Super Notes

To: Coast Division Membership
From: John Marshall
Subject: Division comments for the Fourth quarter of 2007

We had a great September meet and a pair of great clinics for everyone's enjoyment, entertainment and enrichment. Coming up in December we will have another great pair of clinics so please plan to attend.

At the December meet we will have a special raffle. This is for a Broadway Limited locomotive that was entrusted to Jon Miller by the folks at Broadway and Tony's Trains to do a little hands on testing & development with. It is a GE AC6000 that has a sound unit in it. The locomotive is currently set up for DC operation and sound but the sound module has a plug-n-play connector so the lucky winner can convert to DCC if they wish. Jon was kind enough to donate this locomotive in BLI's name to the Division as a funds raising opportunity. Because of the value of this unit, we will raffle this item off separately from our normal activities. This raffle will be held directly after the business meeting and before we begin the auction. Tickets for this auction will be sold only until 12 noon.

Last issue, I spoke about the Region program to get the Divisions to be more active in supporting the Boy Scouts of America Railroading Merit Badge program. I have been in contact with some members of the BSA leadership and I hope to have them attend the December meet and outline the program and the potentials that we have for interfacing with them to make this program a valuable and life long experience for the boys. Only by bringing youth, male and female, into the hobby can we insure that it continues to exist beyond our lifetimes. Please listen to what they have to say with a positive attitude and be a participant.

I know it is still only late October as I write this but I want to take this opportunity to wish each and every member of our Division a safe, happy and wonderful holiday season.

OS



Sign up for the Sierra Memories PCR Convention 2008
April 30 Through May 4, in Fresno.

The Sierra Memories 2008 PCR Convention will take place at the [Ramada University](#), 324 East Shaw Avenue (northwest corner of East Shaw Avenue and North Fresno Street) in northern Fresno, conveniently located adjacent to Highway 41.

This facility offers modern comfortable accommodations and complete convention services under one roof. For details go to <http://www.pcrnmra.org/conv2008/>

The Train Shows are BAAAACK!-- Come on Down!

by Steve Wesolowski, Coast Division Publicity Volunteer

Well, now that days are getting shorter again, the model train shows are 'migrating' here for the Fall & Winter as it were. Thanks to the enthusiasm and generosity of time of several Coast Division volunteers, several of us tried recruiting some new PCR/NMRA members at the GTE show at the Santa Clara County Fairgrounds a couple weeks ago. If you are interested, we also plan to be at the Pleasanton GTE show in November 24/25 (Thanksgiving week-end), at the Alameda County Fairgrounds. See www.trainexpoinc.com for more details on GTE's upcoming show. Email me or post your interest on the PCR list if you want to help in Pleasanton.

It was at a Pleasanton GATS show in Y2K where I rejoined the PCR & NMRA after a 32 year break. That was a couple months after i stumbled upon the NMRA National Train Show in San Jose earlier that year, and 'discovered' the Model Train hobby was still around. IIRC, Jim Long, Chuck Mitchell and Dave Connery were volunteers at the PCR/NMRA table in Pleasanton when I signed up. I haven't missed volunteering for a local Train Show since then, until last month when I spent that Saturday (finally) visiting the Portola CA RR Museum for my 1st time with Chuck Mitchell and Tom Crawford, two of my many PCR Friends, but I volunteered at the San Jose GTE show Sunday.

By volunteering I usually pay for Parking, but Admission is free, so I have a few more bucks left to spend on train stuff, AND I always meet some new/returning model railroaders I enjoy talking with and/or helping find their way through the confusion of scales and modeling one finds at these shows.

If you haven't volunteered at a train show, i know you have missed out on some real fun. I suggest you Try it at least once --you may find you enjoy meeting & helping new modelers (and, sometimes their parents) discover how best to approach this sometimes confusing hobby without getting turned off and/or confused before they get very far.

Something I have discovered, as a single misanthrope with usually no time for, little patience with, or much interest in most children under the age of 30 years: I find myself actually enjoying the company of younger Homo Sapiens. Especially those interested in learning about and trying their hand at the John Allen/Allen Fenton Timesaver, or just wanting to learn more about trains. Somehow, I find myself being nice to youngsters I think because those attending love trains, we actually have something in common. Plus, I get to tell Grabby Ones: NO! they can't touch our Timesaver cars, but they can play/solve a puzzle with them, IF they don't touch them. Some part of me "enjoys" the 'power trip' of telling some 'kids' what they Can't Do -- Kids who have Never been told they can't do anything they want. This satisfies the Petty Despot Parenting Urge I have found even I have a little bit of; I also get to practice what I t hink of as My Authoritarian Teacher Voice. If I get bored being such a jerk, i can just wander off to enjoy watching some trains, and mellow out. So you can see, even the least socialized modelers among us can have fun playing with trains and minds at Train Shows.

Somewhat less facetiously, Sunday at the San Jose GTE show last month I met/got to know better other modelers who taught me some new things I wanted to learn about model railroading which will increase my enjoyment of our hobby. I find you never know what you will learn when you spend time in the company of others who love trains, as long as I'm open to listening & asking questions instead of always just talking...

Last but not least, volunteering for the PCR/NMRA at Train Shows counts towards a Volunteer Certificate. That demonstrates something important but maybe not always obvious: You don't have to spend a dime at train shows to get something worthwhile at them. For many of us, just enjoying trains with like minded folk of all ages is enough of a reward...Thank you for listening.

Special Decoder Pro Clinic and Donated Engine

By Jon Miller and Ogden Lemont

Learn how to use Decoder Pro, the free computer program that lets you use a graphical interface to program your DCC decoders. It makes it easy to set sound levels, speed tables, etc., and will print out a list of all your CV values. It saves your settings for a given locomotive so that in case of problems, it can restore your settings. It has many other great features that make programming a decoder easy.

This clinic has up to a 2 hour time slot so we wouldn't be rushed. There will be a handout limited to 25 copies.

Be sure to have lots of questions for the presenters!

As a special Bonus, BLI supplied a Blueline engine to test the decoder lock. Instead of returning it BLI has donated the engine to Coast Division when the testing was finished. It's an AC6000 painted for Union Pacific.

We will be using this engine in the Decoder Pro clinic. It will then be auctioned off as described in the Superintendent's Notes. It has a retail value of approximately \$165.

Division Banquet

By Tom Crawford

The Division Banquet will be on Saturday April 5, 2008 at the El Patio Mexican Restaurant across the street from the historic Centerville Depot, which is an active train station on the Capital Corridor line, with the logic of having train travel to the station, a tour of the station, dinner and a presentation on the station and other stations with time to catch the last train home. Incoming trains are 2:39 PM westbound and 2:49 PM eastbound so we can start at 3 PM and end in time for the 8:09 PM (westbound) and 8:19 PM (eastbound) trains to go home.

Tickets will be available at the December Coast Division Meet. More information to follow.

**Model Railroad Appraisals
Estate Planning and Disposal
John Marshall
8211 Moller Ranch Drive
Pleasanton, CA 94588
Ph: 925-461-0206 Fax: 925-461-9061
Email: ntrak@sbcglobal.net**

Tom's Trackside Trains

**1675 Rollins Rd. Suite B-1
Burlingame, CA 94010
Tom Van Horn
tomstracksidetrains.com**

Hours:

**Wed & Fri: 12-8 Thu: 12-5
Sat: 12-6; Sun: 12-3**

**Phone (650) 692-9724
Fax (650) 692-9725**

Registrar's Report By John Ameling

At the September meet we had 95 attendees: 82 from Coast Division, 3 from Sierra Division, 3 from Redwood Division, and 2 from Other. There were 2 guests.

Raffle income has come back strong. With 95 attendees at the September Raffle sales amounted to \$188. This represented \$1.98 per attendee compared to \$1.26 in March. With a good December meet, Net raffle income could be positive for the year.

Attendance is still low. In the past a 4 meet rolling average attendance was staying over 100. For the past two meets this average has been 96.

We had 17 door prizes and 6 raffle prizes. The raffle prizes included \$175 in gift certificates, and the "Steam Trains of the World" donated by the superintendent.

More details in the E-Dispatcher.

Show and Tell / Model Contest – September 2007 Recap By John Sing

September 2007 again had many beautiful models displayed. Thank you to *all* the participants who entered and put on such a good show for the rest of us; we hope you enjoyed our deep admiration and appreciation for your sharing it with us.

Model Contest

Congratulations to the Model Contest winners by Popular Vote. Thanks to *all* who participated - you are all winners by making a great show for us all.

By Popular Vote, the Model Contest lucky winners were:

1st place Steam Locomotive :



Mark Schutzer, Southern Pacific #2467, 4-6-2 Pacific in HO Scale

1st Place Diesel Locomotive:



Chuck Mitchell, Great Northern SW9 #189

(we did not have an entry in Passenger Car – you should have been there to enter! J

NMRA contests are not about winning, rather, they are about the fun of participating to share your pride and joy in modeling, and having fun self-inspiring yourself. We all love to see your pride and joys. Bring something to share, and enter for the Fun of it in a future edition of the Coast Division Model Contest.

Show and Tell September 2007

We also had great participation and wonderful models in our regular quarterly Show and Tell table.

Participants and photos included:

Ken Lunders Stevens Creek Models - Chelsea Station and SRR boxcar:



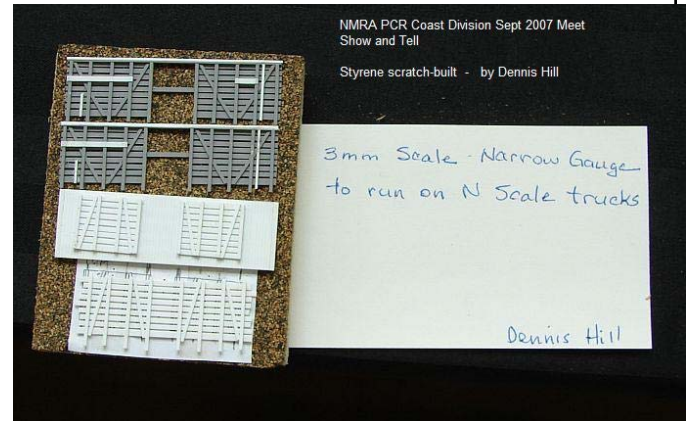
Mark Schutze More HO Steam:



Alf Modine O scale tender:



Dennis Williams - 3mm scratchbuilt narrow gauge (built to use N scale track) :



Mike Blumensaadt, Passenger Trains in N scale:



Steve Williams handbuilt N scale turnout:



John Sing N scale modern Santa Fe:



(Continued on page 8)

Thanks again to all who participated, and we look forward to seeing you at Show and Tell in upcoming Meets. Bring something that you would like share - a model(s), display about your current project, a work in progress, it's up to you, as any category is always welcome for Show and Tell. We love to see what you're up to!

And thanks to our many volunteers, we could not do any of this without each and every one of you!

For example, here is picture Registrar John Ameling and Photo Contest Chair Pat LaTorres:



NMRA PCR Coast Division Sept 2007 Meet
Registrar John Ameling (left), Photo Contest Chair Pat LaTorres (right)

Upcoming Model Contest Categories

Coast Division Model Contest categories are rotated as shown throughout the year. For Results for December 2007 will be determined by Popular Vote. Arrive and enter early to get more votes!

December 2007: "Favorite Model" (open category)

March 2008: Freight Car, Caboose, Maintenance of Way

June 2008: Structure, Display/Diorama, Self-Propelled Cars & Traction

September 2008: Steam Locomotives, Diesel & Other Locomotives, Passenger Car

And of course, at every Meet we always have our popular **Show and Tell**. December Meet is always a great turnout for Show and Tell or Model Contest – bring something and share Holiday Cheer and your models with us!

John Sing

Timesaver Corner By Mark Schutzer

The winners of switching contest for the September meet were:

- 1st Place Brake Person: Dave Loveless (who was promoted to senior)**
- 2nd Place Brake Person: Don Shortt**
- 3rd Place Brake Person: Sean Augenstein**

- 1st Place Senior Brake Person: Bill Burkett** (alright, we need to beat this ace too. Let's get it together)
- 2nd Place Senior Brake Person: Steve Wesolowski** (alright Steve!!! – he spent years figuring out how to get past Brake person)
- 3rd Place Senior Brake Person: Alan Havens.** (Come on Alan, I know you can beat Bill.)

(Editor's Comment-Your editor was unable to compete because he was stuck behind the auction table "helping." Dirtyricklesfratz!!!)

Congratulations to all our winners!

Come see us at the next meet and try your luck against the Timesaver. To quote Tom Van Horn "It's a lot of fun and you have to try it because it's FREE!"

(Continued on page 9)

(Continued from page 8)

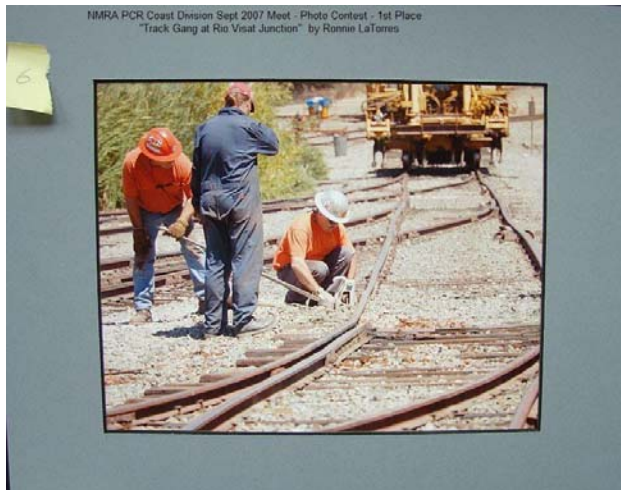
Photo Contest By Pat LaTorres

The theme was: "Working On The Railroad":

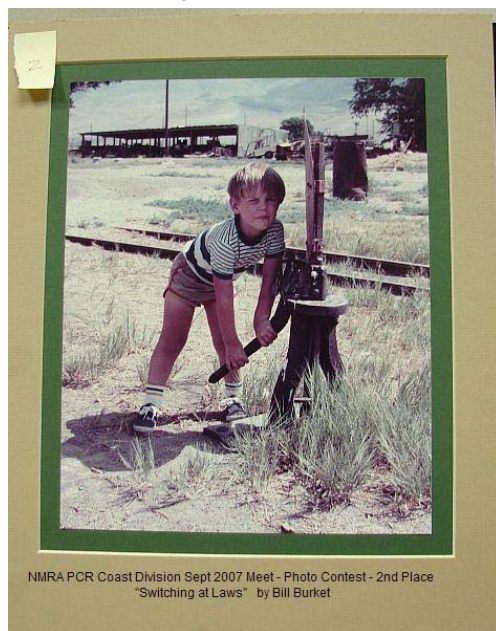
There were many artistic, noteworthy, and creative entries, and every one is worthy of award and mention. Thank you to all who brought your photo to share, we all love seeing your work.

The winners were:

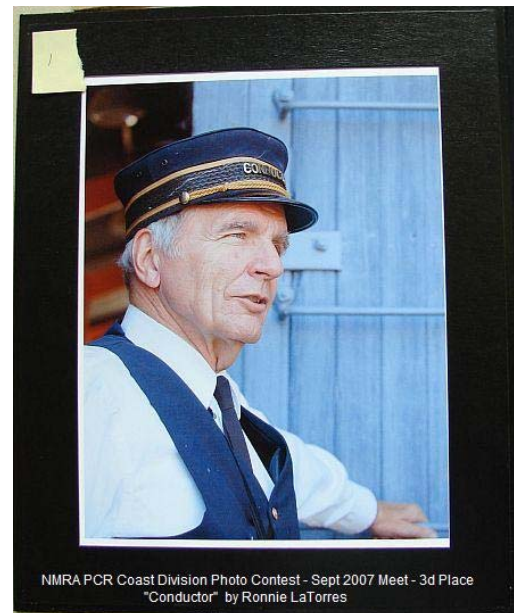
1st place: "Track Gang At Rio Vista" By Ronnie LaTorres



Second Place: "Switching at Laws" By Bill Burket



Third Place: "Conductor" By Ronnie La Torres



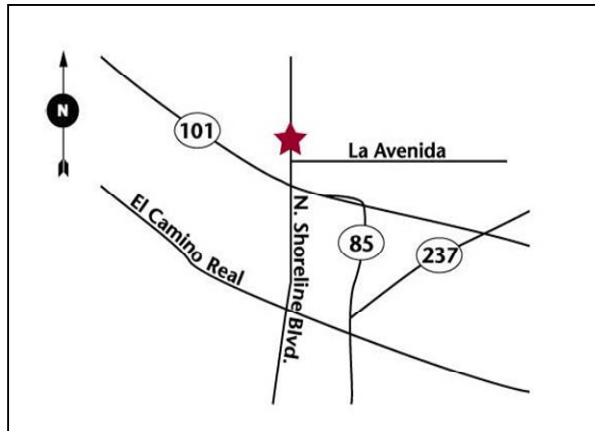
The category for the December meet will be "Trains in Action"

All photos should be matted (inexpensive, re-usable mattes can be had at most art supply stores) and should be between 5x7 and 11x14 in size. Hope to see your work there!

Results are determined by Popular Vote. Bring your photos early to get the early votes.

More details in the E-Dispatcher.

The next meet will be on December 2, 2007 at the
Computer History Museum 1401 N. Shoreline Blvd, Mountain View
Details are on Page 1. Here is the map.



From San Francisco: Take Highway 101 South. Exit Shoreline Blvd. At the light, turn left onto N. Shoreline Blvd. After going over the freeway and crossing through the light (La Avenida), take an immediate right into the first driveway. You are there.

From San Jose: Take Highway 101 North. Exit Shoreline Blvd. At the light, turn left onto N. Shoreline Blvd. Take an immediate right into the first driveway. You are there.

The Museum Entrance faces the North Parking Lot. The door will be manned.

**Coast Dispatcher
4337 La Cosa Ave
Fremont, CA 94536**